



# DV4500

## GETTING STARTED

Thank you for purchasing the Mustek DV4500 Multi-functional Digital Video.

We have included this convenient Getting Started to help with the basic operations. For more details on the different functions and operations, please refer to the User Guide.

### HOW TO CONTACT US

Website:  
http://www.mustek.com  
Customer Service:  
(General Info)  
Email: cservices@mustek.com  
Fax: (949) 788-3670  
Technical Support:  
Email: tsupport@mustek.com  
Phone: (949) 788-3600  
Address:  
15271 Barranca Parkway,  
Irvine, CA 92618

### PACKAGE CONTENTS

- Digital Video
- Installation CD
- Bundled AP
- User Guide
- Getting Started
- 1.5V AA Alkaline Batteries (2)
- USB Cable
- AV Cable
- Earphone
- Strap
- DV Bag
- Tripod

## ICONS & INDICATORS

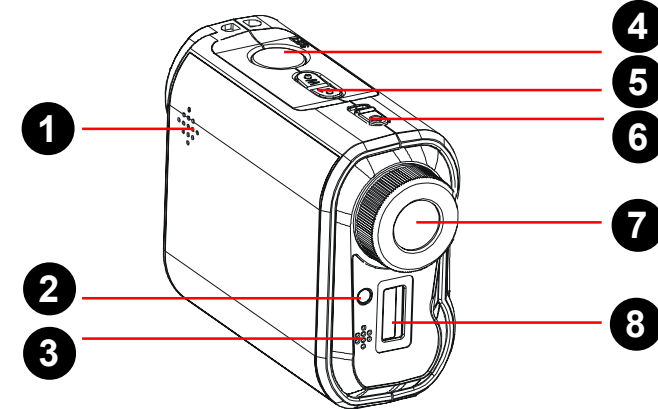
Card Status		Icon	Function
	With Card		Night Shot
	Card Lock		Quick Review
Battery Status		Icon	Function
	Battery Full		Information
	Battery Low		Attach Date
	Out of Battery		Date
Mode Switch		Icon	Function
	DSC Mode		Beep
	DV Mode		Auto-Off
	DVR Mode		NTSC/PAL
	MP3 Mode		50Hz/60Hz
Resolution		Icon	Function
	Fine Resolution		Repeat One
	Normal Resolution		Repeat All
	Economic Resolution		Rotate
Auto Focus		Icon	Function
	Macro		Delete One
	Normal		Delete All
Menu / OSD Icon		Icon	Function
	Digital Effect		Direct Print
	Flash		File Protect
			Self-timer

## CAPACITY CHART

DV	Picture Fine 2336x1752	Picture High 2048x1536	Picture Low 1024x768	Video High 640x480	Video Medium 352x288	Video Low 320x240	Voice Fine	Voice Normal
32MB	59	95	495	3 min	7 min	22 min	44 min	44 min
64MB	114	183	950	7 min	15 min	42 min	84 min	84 min
128MB	234	374	1943	13 min	29 min	78 min	156 min	156 min
256MB	462	740	3837	24 min	50 min	136 min	272 min	272 min
512MB	939	1501	7781	51 min	107 min	292 min	584 min	584 min

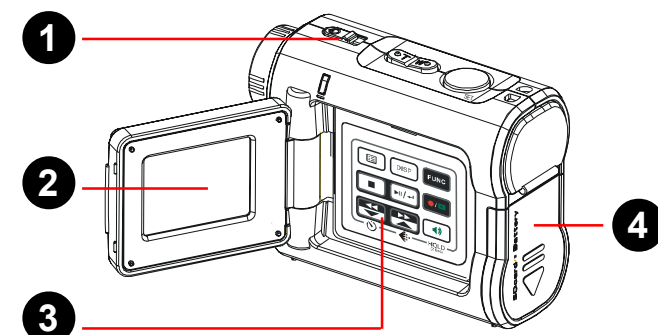
## 1 IDENTIFYING THE PARTS

### Front View



1. Speaker 2. Front LED 3. Microphone  
4. Shutter 5. Zoom 6. Power button  
7. Lens (Macro/Normal) 8. Flash

### Side View

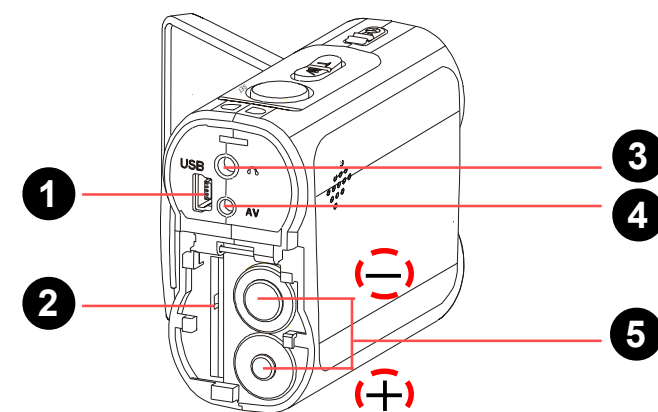


1. Status LED (Power On/USB)  
2. LCD Viewfinder  
3. Panel

Icon	Function	Icon	Function
	Menu		Display
	Function (Mode Switch)		Exit / Stop
	Play / Pause / Enter		Record / Playback
	Back / Down Self-timer		Next / Up Resolution
	Volume		
	Hold (Press 2 Sec.)		

4. Battery/SD/MMC Cover

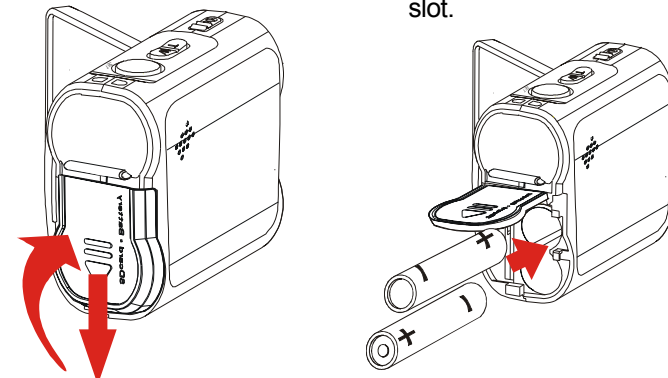
### Back View



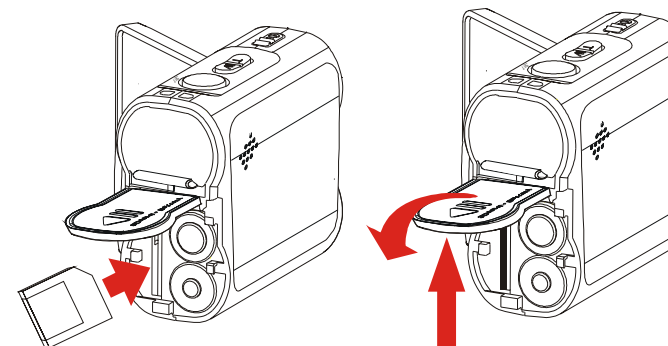
1. USB Port 2. SD/MMC card Slot 3. Earphone jack  
4. AV out 5. Battery Slot

## 2 LOADING BATTERY/CARD

1. Pull out the battery cover and uplift it.  
2. Insert the AA Alkaline batteries into the battery slot.

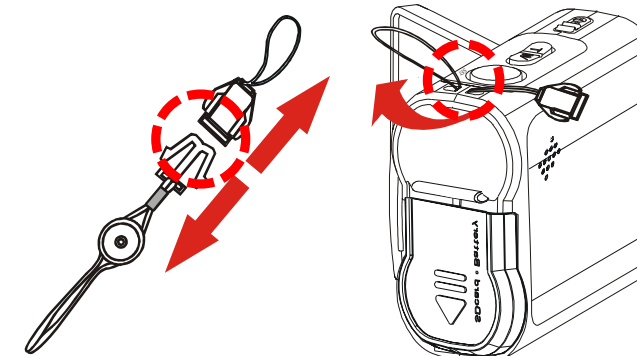


3. Insert the SD/MMC memory card into the card slot.  
4. Press the battery cover down and push it inside until its clutch is connected to the unit.

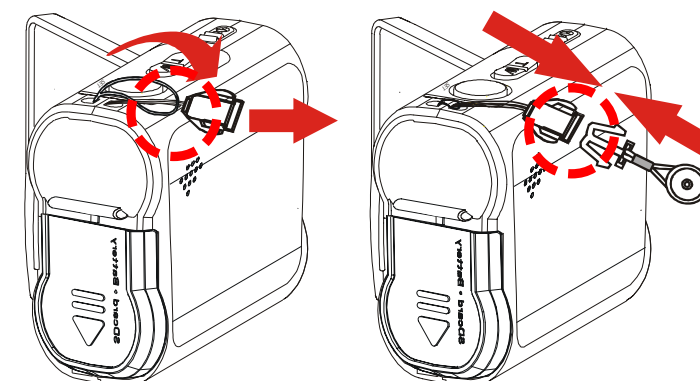


## 3 ATTACHING THE STRAP

1. Pull out of two clutches of the loop.  
2. The small loop goes through the strap holder.

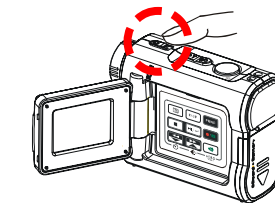


3. Then the small loop goes through one clutch of the loop again and pull tightly.  
4. Finally, connect two clutches of the loop.

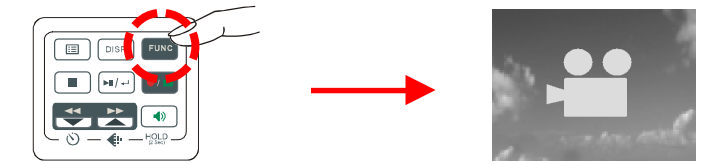


## 4 RECORDING VIDEOS

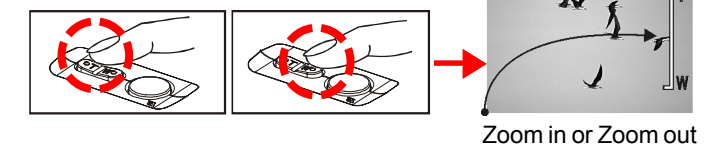
1. Power on the Camera.



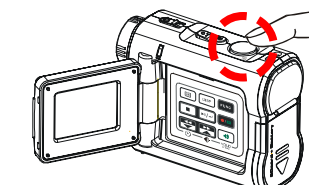
2. Press the **FUNC** Button to switch to Video Mode (DV).



3. Press the **Zoom-in** or **Zoom-out** Button to frame your video.

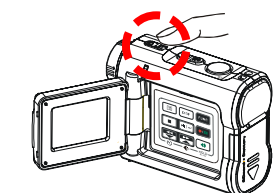


4. Press the **Shutter** Button to start recording.  
5. Press the **Shutter** Button again to stop recording.

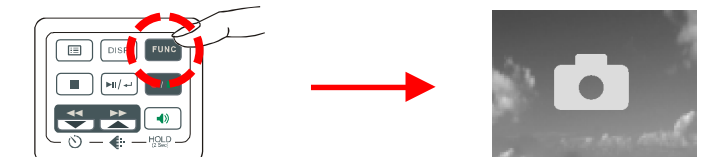


## 5 TAKING PICTURES

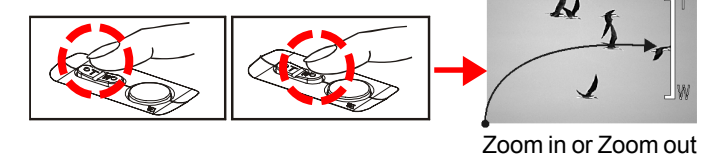
1. Power on the Camera.



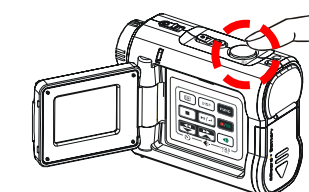
2. Press the **FUNC** Button to switch to Video Mode (DSC).



3. Press the **Zoom-in** or **Zoom-out** Button to frame your picture.

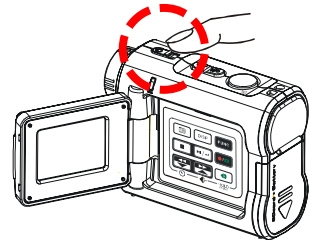


4. Press the **Shutter** Button to take a picture.

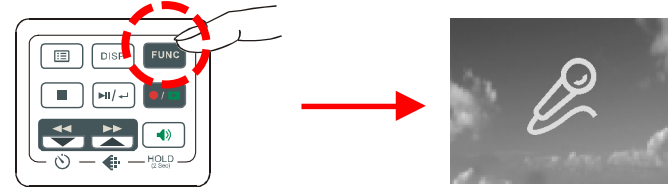


## 6 RECORDING VOICE MESSAGES

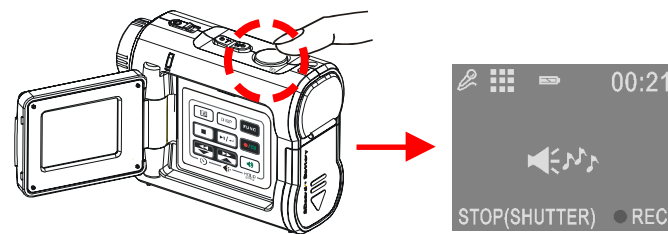
1. Power on the Camera.



2. Press the **FUNC** Button to switch to Voice Mode (DVR).



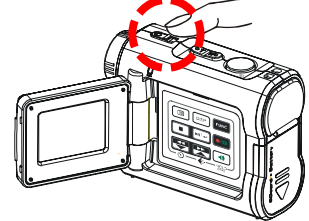
3. Press the **Shutter** Button to start recording.



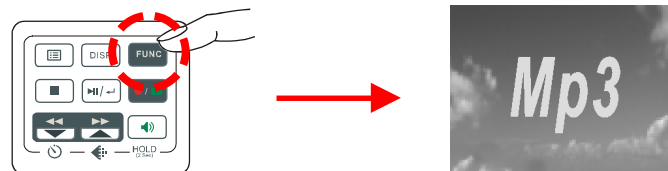
4. Press the **Shutter** Button again to stop recording.

## 7 LISTENING TO MP3 MUSIC

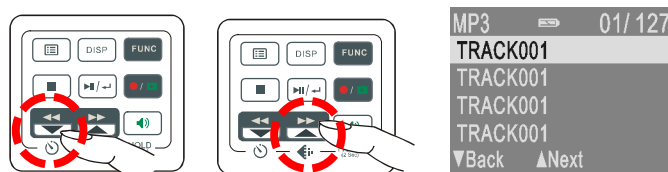
1. Power on the Camera.



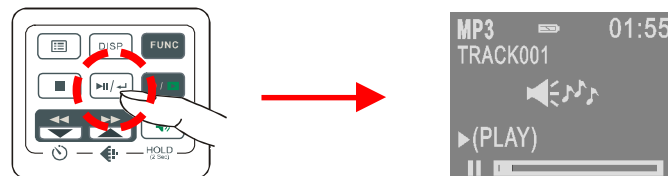
2. Press the **FUNC** Button to switch to MP3 Mode.



3. Press the **BACK** or **NEXT** Button to select one track.

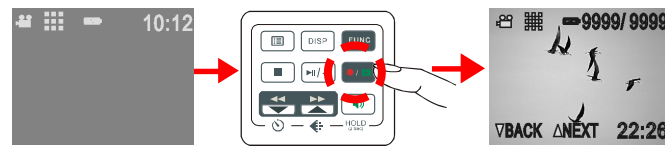


4. Press the **PLAYBACK** Button to play MP3 music.



## 8 BASIC PLAYBACK

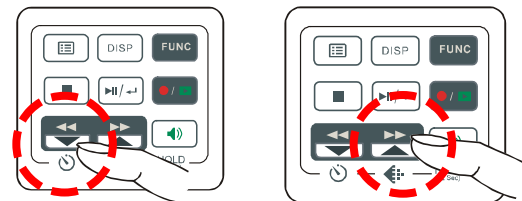
1. Press the **Playback** Button to switch to Playback mode.



2. The information of the selected file will show on the LCD.



3. Press the **BACK** or **NEXT** Button to scroll thru your pictures, videos and sound files.

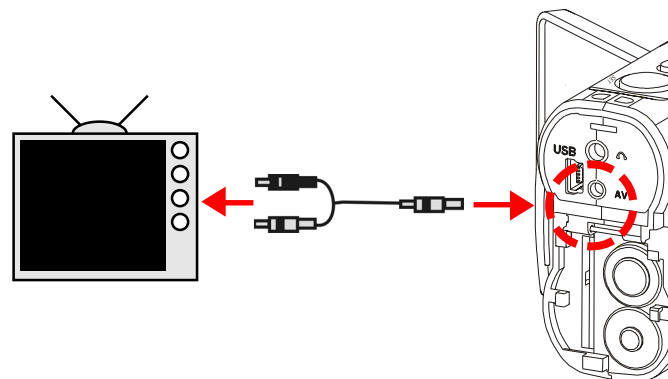


## 9 VIDEO OUT

This device can connect to other consumer electronic devices such as TV, VCR or DVD Recorder by using the included A / V cable.

To connect the camera to other devices follow these steps:

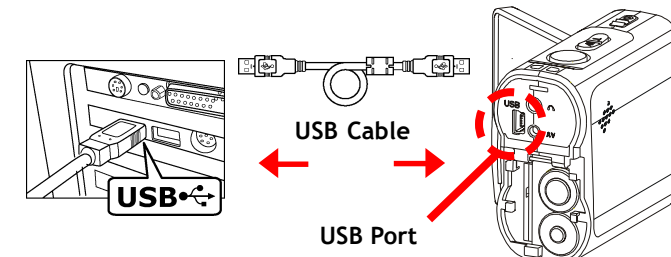
1. Connect the A / V Cable to this device.
2. Connect the Video (yellow) connector to the Video Input (yellow) jack of the device.
3. Connect the Audio (red and white) connectors to the R and L Audio Input (red and white) jacks of the device.



## 10 CONNECTING TO PC

Windows 98 SE – Driver Required:

1. Put the installation CD in your CD-Rom drive\*.
2. Follow the onscreen instructions for installation.
3. Reboot the PC.
4. Connect the camera to the PC (see illustration).
5. Power on the camera.



Windows Me/2000/XP – No Driver Required:

1. Connect the camera to the PC (see illustration).
2. Power on the Camera.

**NOTE:** If installation does not start automatically:

1. Right-click the **Start** button, and then choose **Explore**.
2. Right-click the letter for your CD-ROM drive (often **D:**), and then choose **Explore**.
3. Double-click **run.exe** and then follow the onscreen instructions.

## 11 TRANSFERRING MP3

Copy MP3 files from your PC to your camera:

1. Locate the desired MP3 files on your computer that you wish to transfer.
2. Select the desired files and then click on "Edit" and select "Copy".
3. Connect the USB cable between this device and the computer.

4. **My Computer**  
Windows 98SE/Me/2000: Double click "My Computer" Icon on the Windows Desktop.  
Windows XP: Select "Open Folder to view files using Windows Explorer" and click "OK".

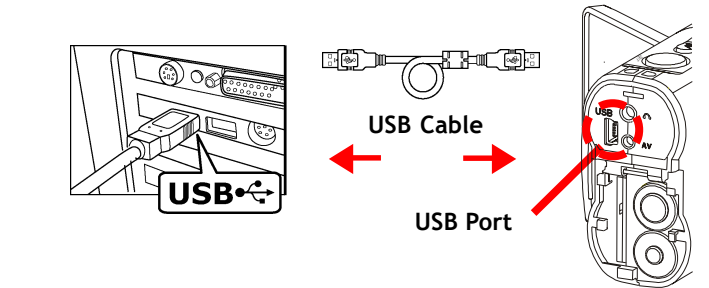
5. **Removable Disk (E:)**
6. **MP3**
7. Click on "Edit" then select "Paste".

**NOTE:** If there is no MP3 Folder, turn on the camera and press the **FUNC** Button until you get to the MP3 Mode. This will automatically create the MP3 Folder for you. Now you may transfer your MP3 files to this folder by starting back at step 6 above.

## 12 TRANSFERRING FILES

Copy files from your camera to your PC:

1. Connect the USB cable between this device and the computer.



2. Windows 98SE/Me/2000: Double click "My Computer" Icon on the Windows Desktop.



Windows XP: Select "Open Folder to view files using Windows Explorer" and click "OK".



3. Double click on the **Removable Disk** folder to open.



4. Double click on the **DCIM** folder to open.



5. Double click on the **100media** folder to open.



6. Follow the **Drag and Drop** method to copy the files to your computer.

**For Single Files:**

1. Click a file to highlight it.
2. Hold down the left mouse button.
3. Drag the file to a folder of your choice.
4. Release the left mouse button.

**For Multiple or All Files:**

1. Click and hold down the left mouse button to highlight the desired files and drag to the folder of your choice. Release the left mouse button.
2. To move all images at once, click Edit, select all.

**To Reuse Your Memory:**

After you copy the files to your computer, you can now delete the selected file or files from the camera so you can clear and reuse the internal memory or memory card.